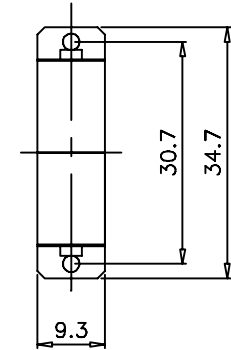
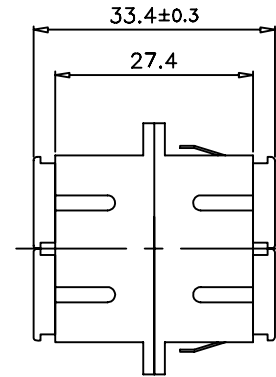


SUGGESTED PANEL CUTOUT



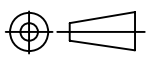
Specification:

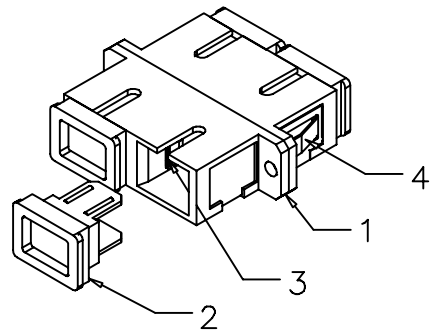
Material:

1. SC Housing : PBT, UL 94V-0, Ivory color.
2. SC Dust Cover : PP, Black color.
3. Holder : PBT, UL 94V-0, Ivory color.
4. Clip : STAINLESS.

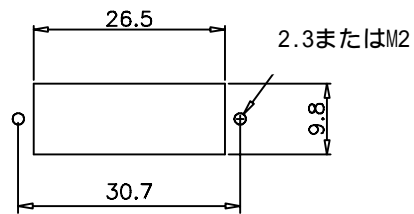
Adaptor Type :

- a. SC to SC Duplex Type, Multimode.
- b. Sleeve: Phosphor Bronze.
- c. Operation Temperature: -20°C to +70°C.
- d. Durability: 500 cycles.
- e. Tensile Strength: 10 kgf.
- f. Insertion Loss: <0.3 dB.

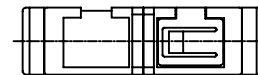
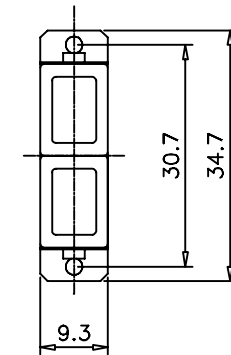
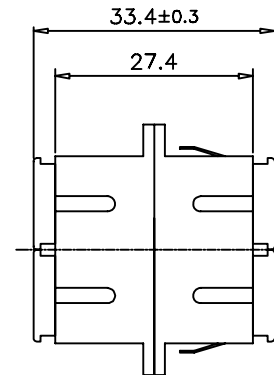
NET MECHANISM Corp www.cabling-ol.net				
SCALE	NONE		REV	A
UNIT	MM			
SHEET	1/1	DWG NO.		
DATE	1/30/08			
TITLE Duplex MM SC to SC Adapter				
PART NO. ADP-DU-SCSC-M				



SCALE 1/1



SUGGESTED PANEL CUTOUT



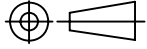
### Specification :

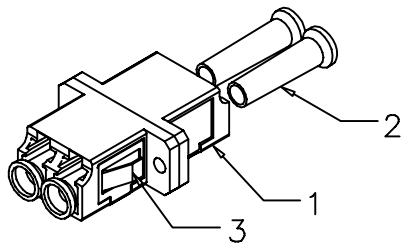
#### Material :

1. SC Housing : PBT, UL 94V-0, Blue color.
2. SC Dust Cover : PP, Black color.
3. Holder : PBT, UL 94V-0, Blue color.
4. Clip : STAINLESS.

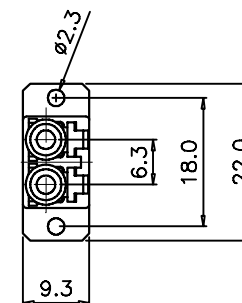
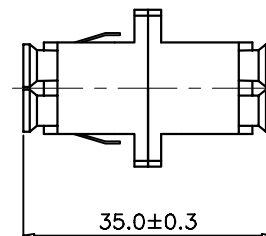
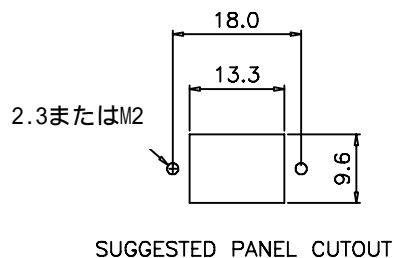
#### Adaptor Type :

- a. SC to SC Duplex Type, Singlemode.
- b. Sleeve : Zirconia.
- c. Operation Temperature : -20°C to +70°C.
- d. Durability : 500 cycles.
- e. Tensile Strength : 10 kgf.
- f. Insertion Loss : <0.2 dB.

NET MECHANISM Corp www.cabling-ol.net				
SCALE	NONE		REV	A
UNIT	MM			
SHEET	1/1	DWG NO.		
DATE	1/30/08			
TITLE Duplex SM SC to SC Adapter				
PART NO. ADP-DU-SCSC-S				



SCALE 1/1



### Specification:

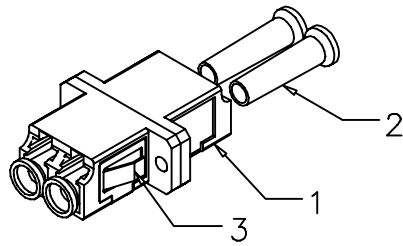
#### Material:

1. Housing: PC UL 94V-0, Ivory Color.
2. Dust Cover: PP3105, White Color.
3. Clip: Stainless.

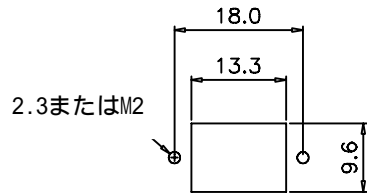
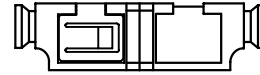
#### Performance:

- a. LC Duplex Type , Multimode.
- b. Sleeve: Phosphor Bronze.
- c. Operation Temperature: -20°C to +70°C.
- d. Durability: 500 cycles.
- e. Tensile Strength: 10 kgf.
- f. Insertion Loss: <0.3 dB.

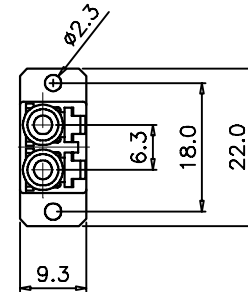
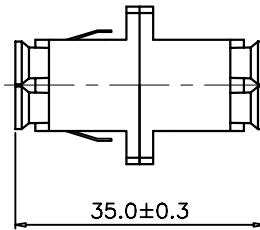
NET MECHANISM Corp www.cabling-ol.net				
SCALE	NONE		REV	A
UNIT	MM			
SHEET	1/1	DWG NO.		
DATE	1/30/08			
TITLE Duplex MM LC to LC Adapter				
PART NO. ADP-DU-LCLC-M				



SCALE 1/1



SUGGESTED PANEL CUTOUT



Specification:

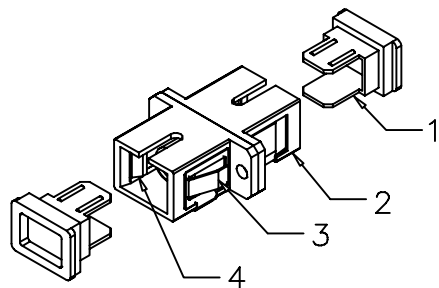
Material:

1. Housing: PC UL 94V-0, Blue Color.
2. Dust Cover: PP3105, White Color.
3. Clip: Stainless.

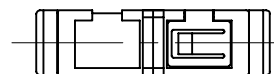
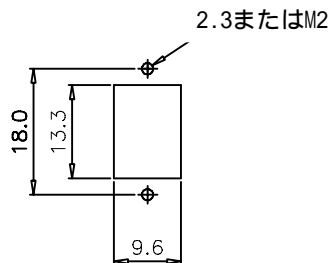
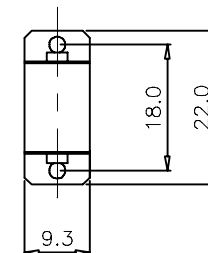
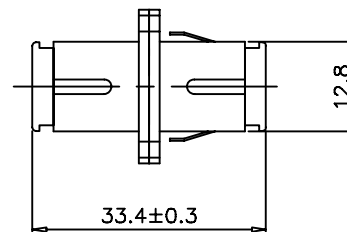
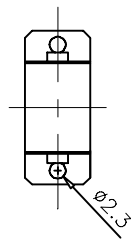
Performance:

- a. LC Duplex Type , Singlemode.
- b. Sleeve: Zirconia.
- c. Operation Temperature: -20°C to +70°C.
- d. Durability: 500 cycles.
- e. Tensile Strength: 10 kgf.
- f. Insertion Loss: <0.2 dB.

NET MECHANISM Corp www.cabling-ol.net				
SCALE	NONE		REV	A
UNIT	MM			
SHEET	1/1	DWG NO.		
DATE	1/30/08			
TITLE Duplex SM LC to LC Adapter				
PART NO. ADP-DU-LCLC-S				



SCALE 1/1



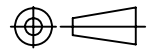
Specification:

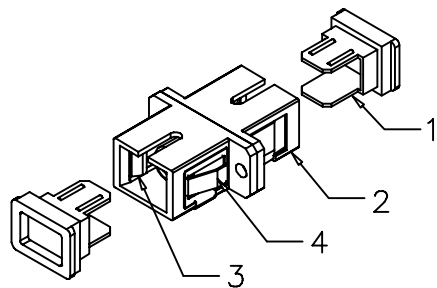
Material:

1. SC Dust Cover : PP, Black color.
2. SC Housing : PBT, UL 94V-0, Ivory color.
3. Clip : STAINLESS.
4. Holder : PBT, UL 94V-0, Ivory color.

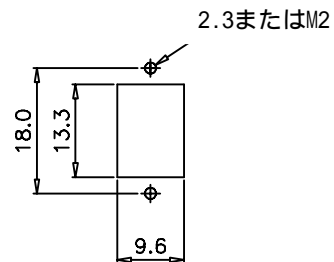
Adaptor Type :

- a. SC to SC Simplex Type, Multimode.
- b. Sleeve: Phosphor Bronze.
- c. Operation Temperature: -20°C to +70°C.
- d. Durability: 500 cycles.
- e. Tensile Strength: 10 kgf.
- f. Insertion Loss: <math><0.3\text{ dB}</math>.

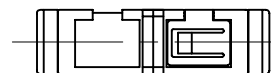
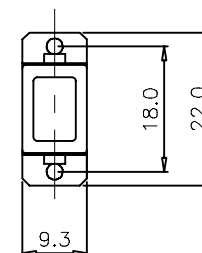
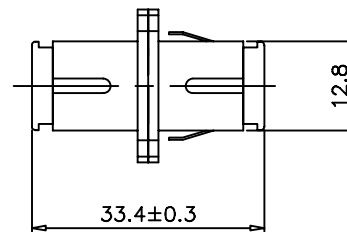
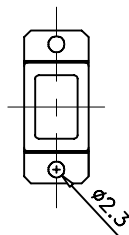
NET MECHANISM Corp www.cabling-ol.net				
SCALE	NONE		REV	A
UNIT	MM			
SHEET	1/1	DWG NO.		
DATE	1/30/08			
TITLE Simplex MM SC to SC Adapter				
PART NO. ADP-SM-SCSC-M				



SCALE 1/1



SUGGESTED PANEL CUTOUT



### Specification :

#### Material :

1. SC Dust Cover : PP, Black color.
2. SC Housing : PBT, UL 94V-0, Blue color.
3. Holder : PBT, UL 94V-0, Blue color.
4. Clip : STAINLESS.

#### Adaptor Type :

- a. SC to SC Simplex Type, Singlemode.
- b. Sleeve : Zirconia.
- c. Operation Temperature :  $-20^{\circ}\text{C}$  to  $+70^{\circ}\text{C}$ .
- d. Durability : 500 cycles.
- e. Tensile Strength : 10 kgf.
- f. Insertion Loss :  $<0.2$  dB.

NET MECHANISM Corp www.cabling-ol.net				
SCALE	NONE		REV	A
UNIT	MM			
SHEET	1/1	DWG NO.		
DATE	1/30/08			
TITLE Simplex SM SC to SC Adapter				
PART NO. ADP-SM-SCSC-S				