

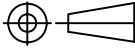
PIN OUT

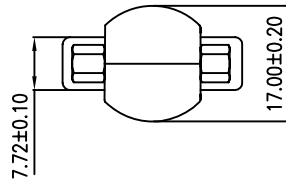
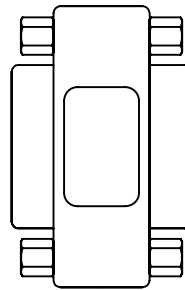
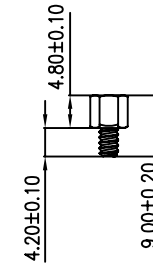
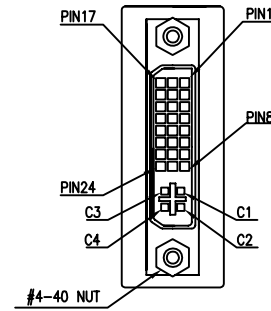
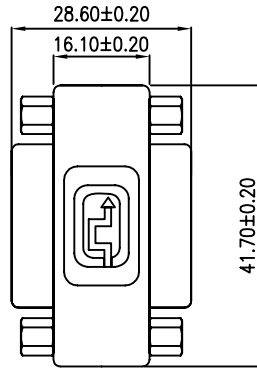
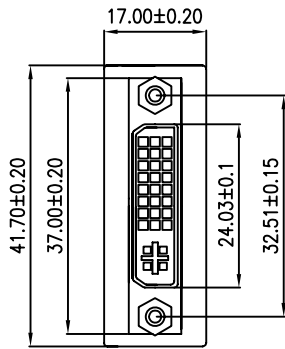
P1	P2
1	1 RED
2	2 WHITE
3	3 SPIRAL

NOTES:

1. CABLE:NON-UL, 26AWG\*2C+SPIRAL SHIELD,BLACK PVC JACK,OD3.0±0.15mm.
2. CONNECTOR:P1: DC3.5mm STEREO JACK, NICKEL PLATED SHELL, WITH HEX NUT AND WASHER.  
P2:DC3.5mm STEREO JACK,SOLDER TYPE,BLACK INSULATION,NICKEL PLATED SHELL.
3. ALL HOOD: MOLDED BLACK 45P PVC.
4. TESTING: 100% ELECTRICAL TESTING.
5. MOLD NO.:DC35-01,DC35F-01.

NET MECHANISM Corp  
www.cabling-ol.net

SCALE	NONE		REV	C
UNIT	MM			
SHEET	1/1	DWG NO.		
DATE	11/08/10			
TITLE	ST3.5F TO ST3.5F			
PART NO.	ADC-35SFSF			



DVI29F	DVI29F	DVI29F	DVI29F
P1	P2	P1	P2
1	1	16	16
2	2	17	17
3	3	18	18
4	4	19	19
5	5	20	20
6	6	21	21
7	7	22	22
8	8	23	23
9	9	24	24
10	10	C1	C1
11	11	C2	C2
12	12	C3	C3
13	13	C4	C4
14	14	C5	C5
15	15	SHELL	SHELL

NOTE:

1. CONN:P1,P2 DVI 24+5 FEMALE,PIN:G/F,INSULATION WHITE, ZINC ALLOY FOR SHELL.WITH 2PCS #4-40 NUT.
2. PCB: PCB-E09-180D-A; PCB-E09-180D-B.
3. P1&P2:HOOD MOLDED 25P PVC BLACK.
4. 100% ELECTRICAL TESTING: CONTACT RESISTANCE: 1 OHM INSULATION RESISTANCE:20M OHM, VOLTAGE: DC 300V.
5. MOLD NO: E09-01, E09-N01.

NET MECHANISM Corp www.cabling-ol.net				
SCALE	NONE		REV	A
UNIT	MM			
SHEET	1/1	DWG NO.		
DATE	08/18/06			
TITLE DVI DF-DF-ADAPTER				
PART NO. ADP-DFDF				