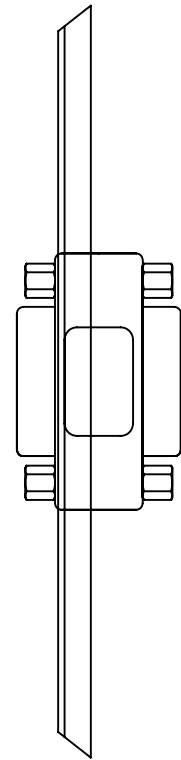
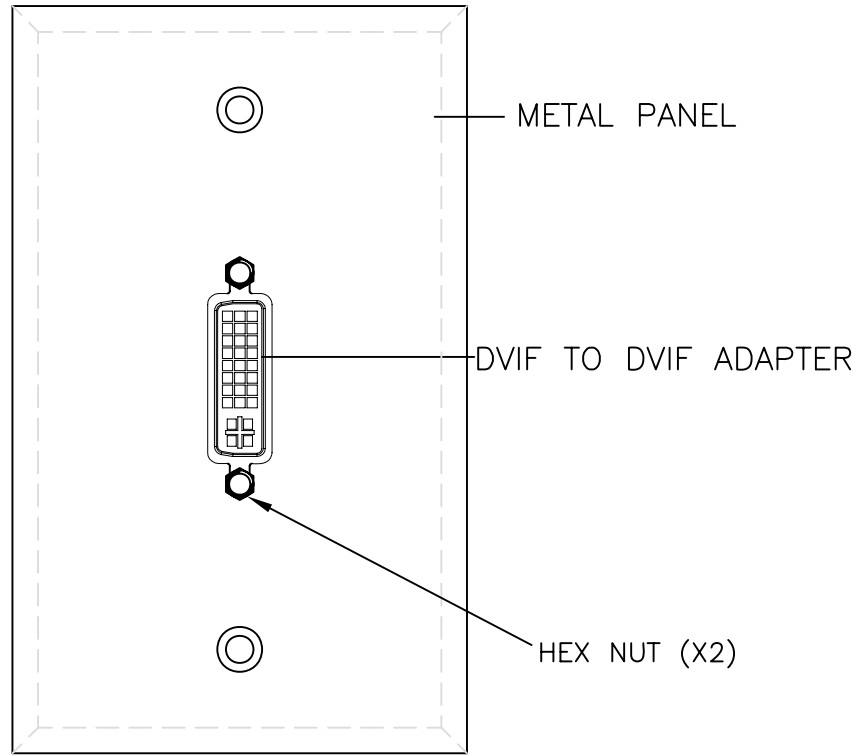
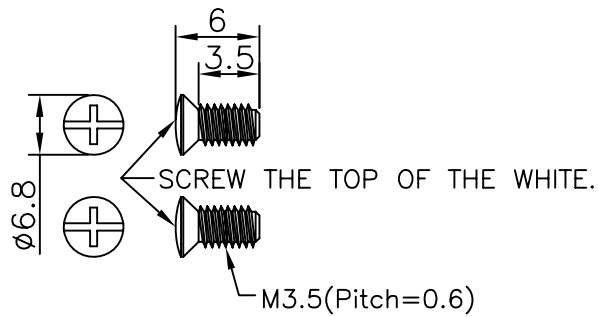


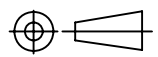
JPFP-DVID

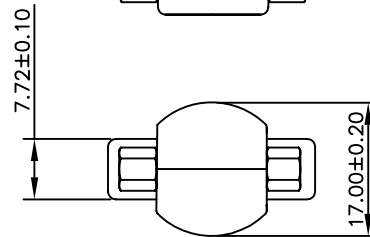
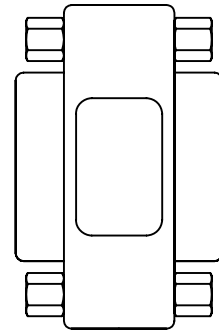
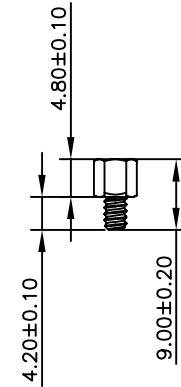
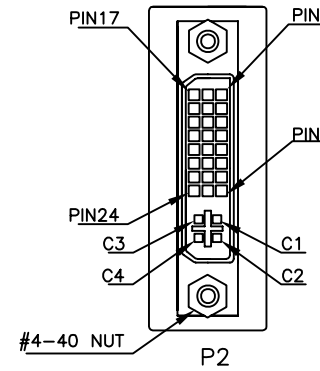
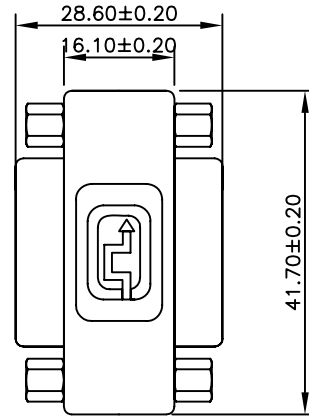
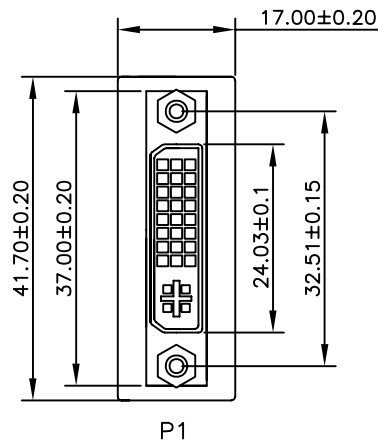


ASSEMBLY DRAWING



SCREW(2PCS)

NET MECHANISM Corp				
www.cabling-ol.net				
SCALE	NONE		REV	A
UNIT	MM			
SHEET	2/2	DWG NO.		
DATE	11/23/10			
TITLE				
DVI DF-DF-ADAPTER FACEPLATE				
PART NO.				
WPAD-WH-DVI				



PIN OUT

P1	P2	P1	P2
1	1	16	16
2	2	17	17
3	3	18	18
4	4	19	19
5	5	20	20
6	6	21	21
7	7	22	22
8	8	23	23
9	9	24	24
10	10	C1	C1
11	11	C2	C2
12	12	C3	C3
13	13	C4	C4
14	14	C5	C5
15	15	SHELL	SHELL

NOTE:

- CONN:P1,P2 DVI 24+5 FEMALE,PIN:G/F,INSULATION WHITE, ZINC ALLOY FOR SHELL.WITH 2PCS #4-40 NUT.
- PCB:PCB-E09-180D-A;PCB-E09-180D-B.
- P1&P2:HOOD MOLDED 25P PVC (WH-02).
- 120 JP METAL FACEPLATE: DVIF STAINLESS STEEL, THICKNESS:0.8MM.COATING: WHITE.
- SCREW: M3.5 (PITCH: 0.6MM) , L=6MM, NICKEL PLATED. SCREW THE TOP OF THE WHITE.
- 100% ELECTRICAL TESTING:CONTACT RESISTANCE:1 OHM INSULATION RESISTANCE:20M OHM,VOLTAGE: DC 300V.
- MOLD NO:E09-01,E09-N01.

NET MECHANISM Corp www.cabling-ol.net				
SCALE	NONE		REV	A
UNIT	MM		DWG NO.	
SHEET	1/2	DATE		
DATE	11/23/10	TITLE		
DVI DF-DF-ADAPTER FACEPLATE				
PART NO.				
WPAD-WH-DVI				