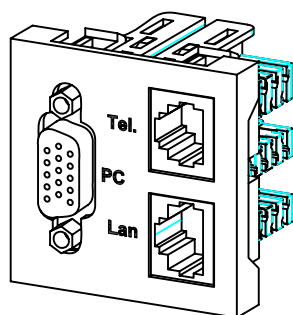
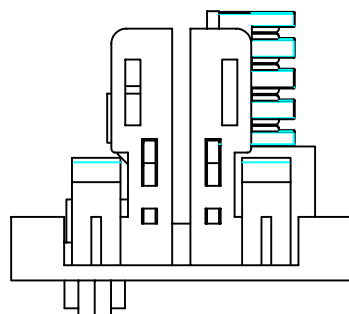


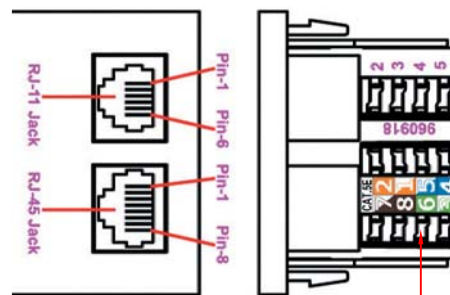
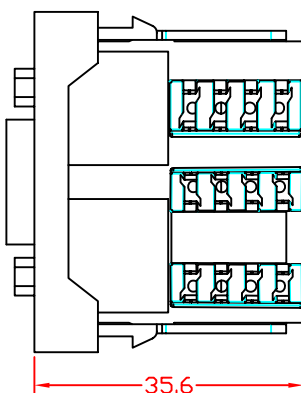
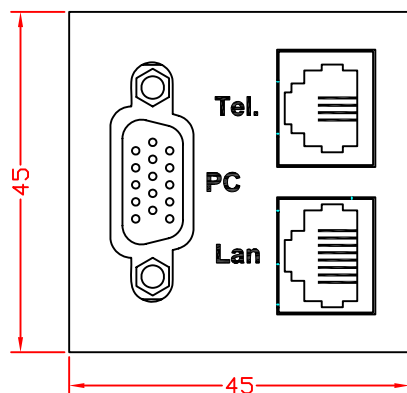
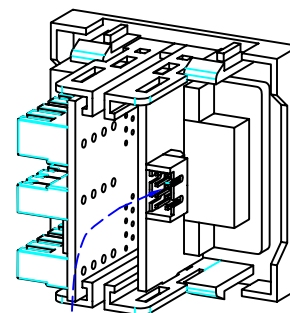
RevNo	Revision note	Rev-By	RevDate	Signature	Checked

VGA AND TEL & LAN MULTI-MEDIA MODULE

ITEM NO: FU-45-HD15-200RJ1145



Pin Connection View



FEATURES:

- VGA and TEL & LAN Multi-Media Module
- Cable Length : 20cm
- Material : ABS
- Color : RAL9010
- Size: 22.5 x 45 x 35.6 mm

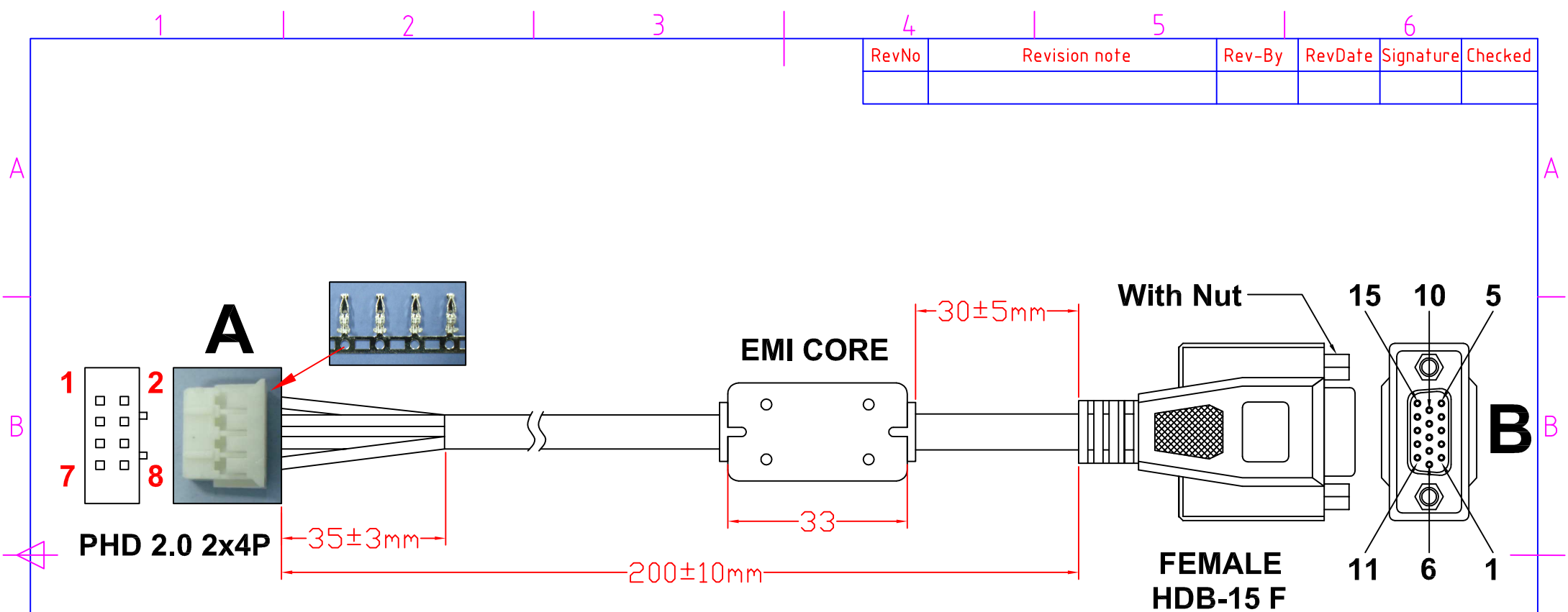
**RJ11 (6p4c) For TEL
RJ45 (8p8c) For LAN**

IDC Block

VGA Cable

ITEM NO.	FU-45-HD15-200RJ1145			
CUSTOMER NO.				
DESIGNED BY	DATE	UNIT	MM	
ALEX	141231	VER.	1	
NO.	Checked by			
APPR:	Approved by -date			

RevNo	Revision note	Rev-By	RevDate	Signature	Checked



PHD 2.0 2x4P

EMI CORE

With Nut

FEMALE HDB-15 F

- | | | |
|----------|------|----------------------|
| A | | B |
| 5 | ———— | 1 (Red Video) |
| 2 | ———— | 2 (Green Video) |
| 8 | ———— | 3 (Blue Video) |
| 4 | ———— | 12 (12 ID1) |
| 3 | ———— | 13 (Horizontal Sync) |
| 1 | ———— | 14 (Vertical Sync) |
| 7 | ———— | 15 (15 ID2) |
| 6 | ———— | 6+7+8+10+G(Ground) |

CABLE: UL20276 JACKET:BLACK

ITEM NO.					
PART NO.					
DESIGNED BY	DATE	140411	UNIT	MM	
Young	SCALE	1:1	VER.	1	
NO.	Checked by				
APPR:	Approved by -date				