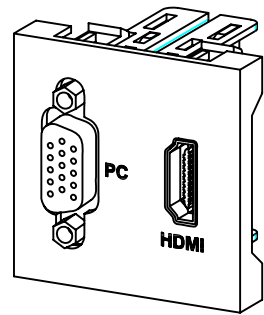
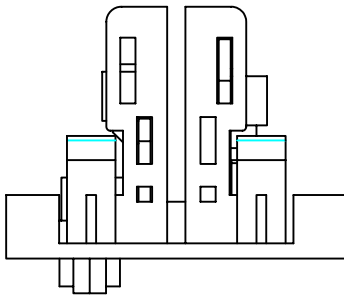


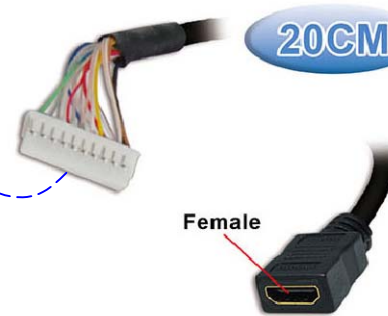
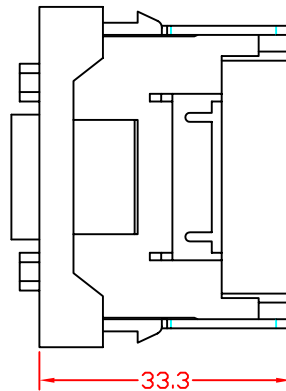
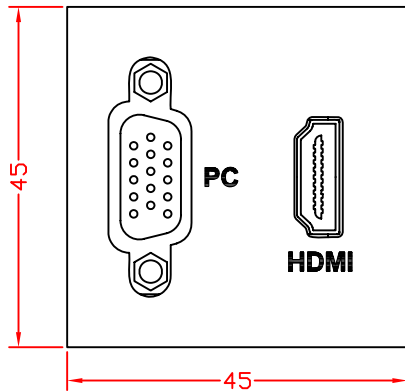
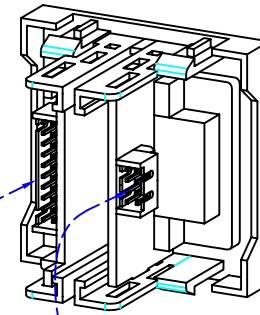
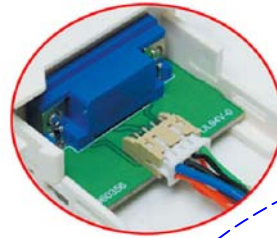
RevNo	Revision note	Rev-By	RevDate	Signature	Checked

VGA AND HDMI MULTI-MEDIA MODULE

ITEM NO: FU-45-HD15-HDMI-200



Pin Connection View



HDMI Cable



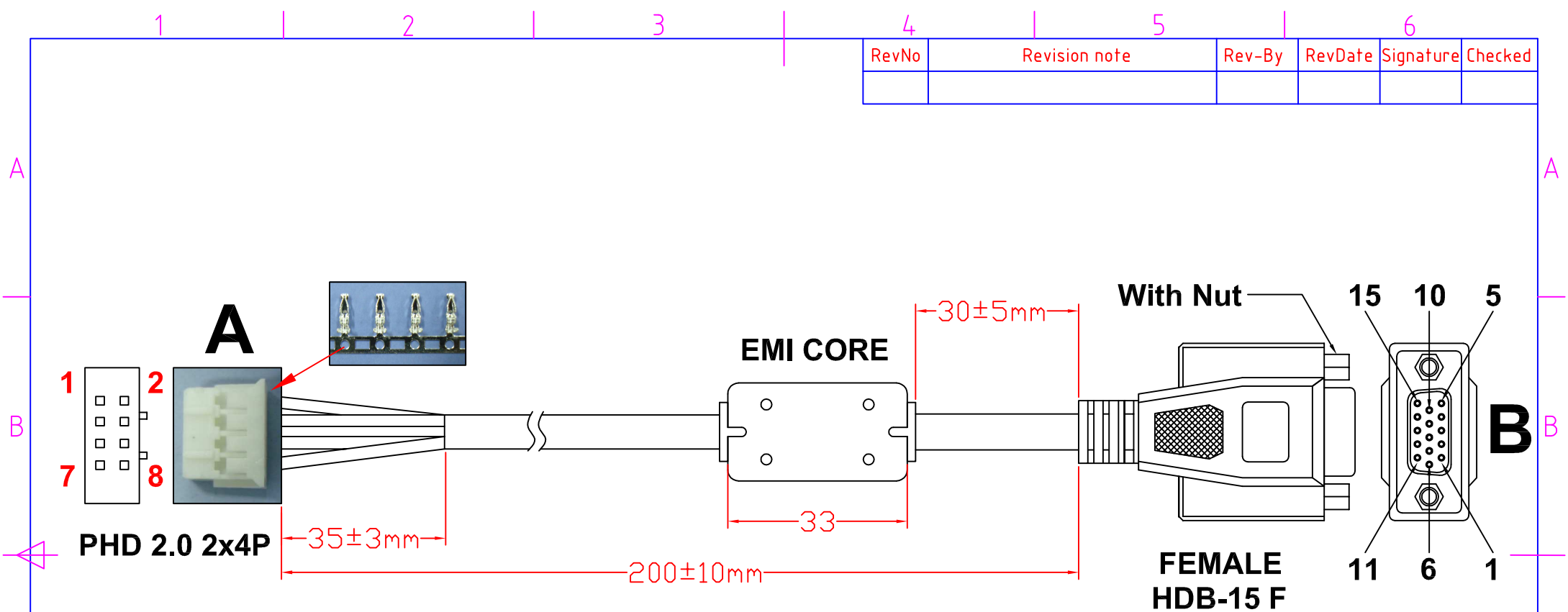
VGA Cable

FEATURES:

- VGA and HDMI Multi-Media Module
- Cable Length : 20cm
- Material : ABS
- Color : RAL9010
- Size: 22.5 x 45 x 33.3 mm

ITEM NO.	FU-45-HD15-HDMI-200			
CUSTOMER NO.				
DESIGNED BY	DATE	141231	UNIT	MM
ALEX	SCALE	1:1	VER.	1
NO.	Checked by			
APPR:	Approved by -date			

RevNo	Revision note	Rev-By	RevDate	Signature	Checked

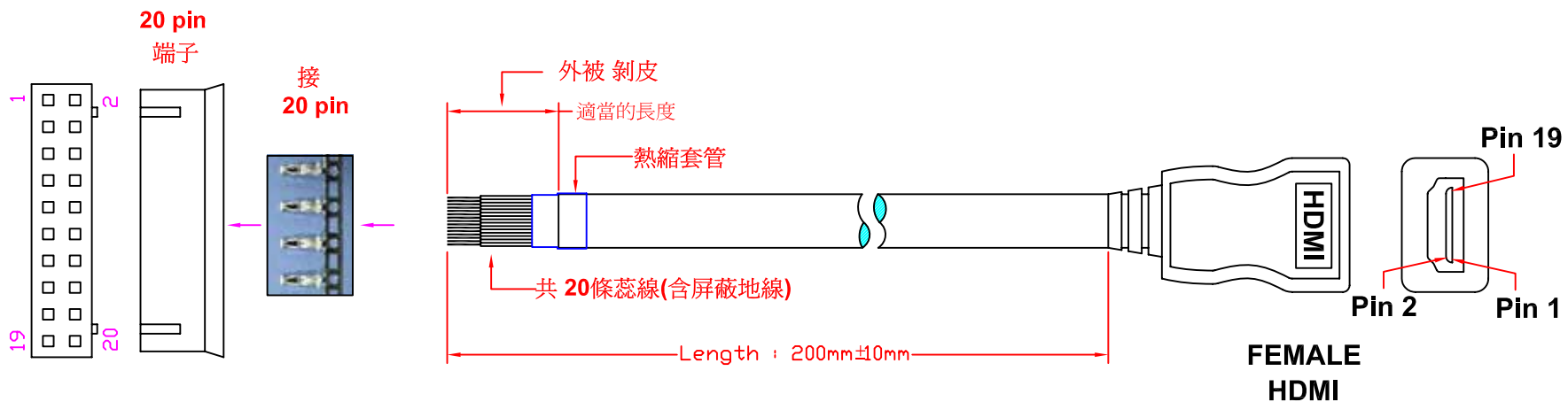


- | | | | |
|----------|------|------------|-------------------|
| A | | B | |
| 5 | ———— | 1 | (Red Video) |
| 2 | ———— | 2 | (Green Video) |
| 8 | ———— | 3 | (Blue Video) |
| 4 | ———— | 12 | (12 ID1) |
| 3 | ———— | 13 | (Horizontal Sync) |
| 1 | ———— | 14 | (Vertical Sync) |
| 7 | ———— | 15 | (15 ID2) |
| 6 | ———— | 6+7+8+10+G | (Ground) |

CABLE: UL20276 JACKET:BLACK

ITEM NO.					
PART NO.					
DESIGNED BY	DATE	140411	UNIT	MM	
Young	SCALE	1:1	VER.	1	
NO.	Checked by				
APPR:	Approved by -date				

RevNo	Revision note	Rev-By	RevDate	Signature	Checked



PIN OUT

端子	HDMI (Female)
20	Shielded
19	1
18	2
	⋮
2	18
1	19

ITEM NO.				
PART NO.				
DESIGNED BY	DATE	130514	UNIT	MM
ALEX	SCALE	1:1	VER.	1
NO.	Checked by			
APPR:	Approved by -date			