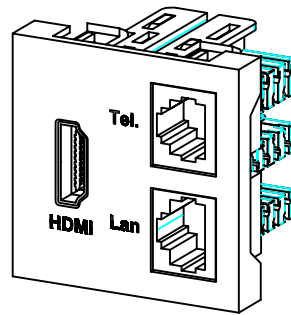
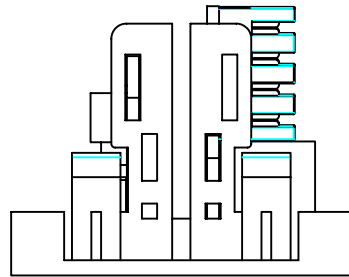


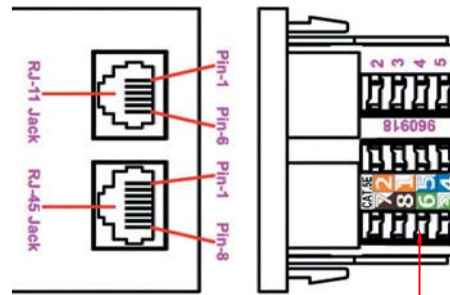
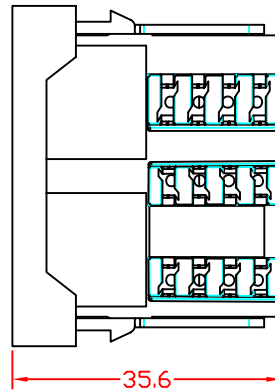
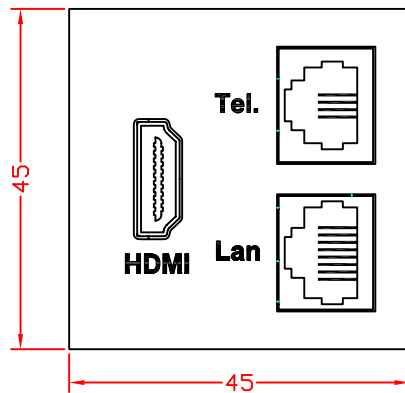
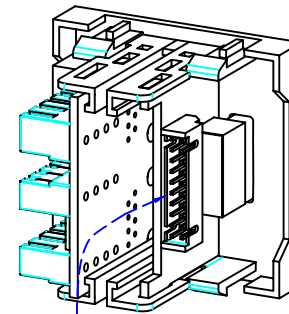
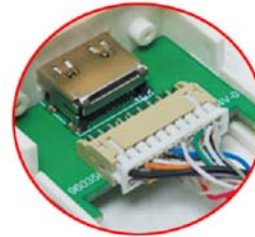
RevNo	Revision note	Rev-By	RevDate	Signature	Checked

# HDMI AND TEL & LAN MULTI-MEDIA MODULE

## ITEM NO: FU-45-HDMI-200RJ1145

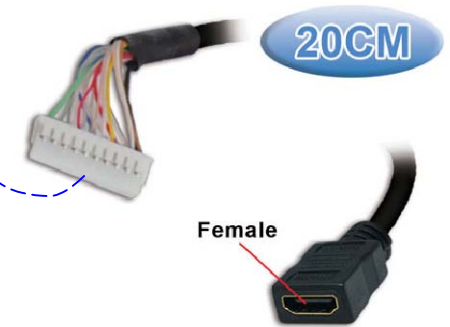


**Pin Connection View**



**RJ11 (6p4c) For TEL  
RJ45 (8p8c) For LAN**

**IDC Block**



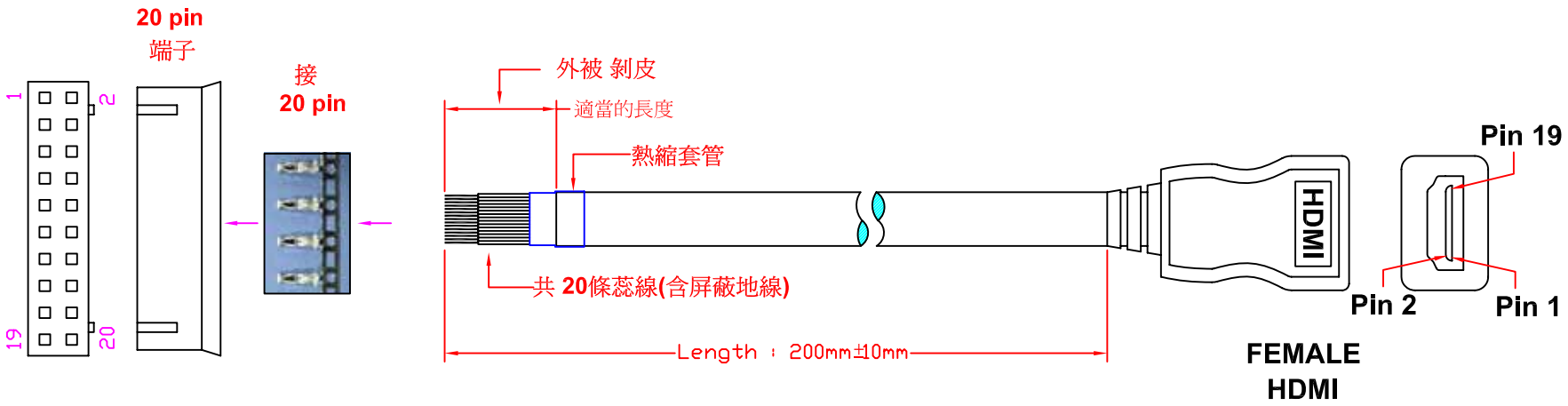
**HDMI Cable**

**FEATURES:**

- HDMI and TEL & LAN Multi-Media Module
- Cable Length : 20cm
- Material : ABS
- Color : RAL9010
- Size: 22.5 x 45 x 35.6 mm

ITEM NO.	FU-45-HDMI-200RJ1145			
CUSTOMER NO.				
DESIGNED BY ALEX	DATE	140924	UNIT	MM
	SCALE	1:1	VER.	1
NO.	Checked by			
APPR:	Approved by -date			

RevNo	Revision note	Rev-By	RevDate	Signature	Checked



**PIN OUT**  
端子 HDMI (Female)

20	Shielded
19	1
18	2
	⋮
2	18
1	19

ITEM NO.				
PART NO.				
DESIGNED BY	DATE	130514	UNIT	MM
ALEX	SCALE	1:1	VER.	1
NO.	Checked by			
APPR:	Approved by -date			