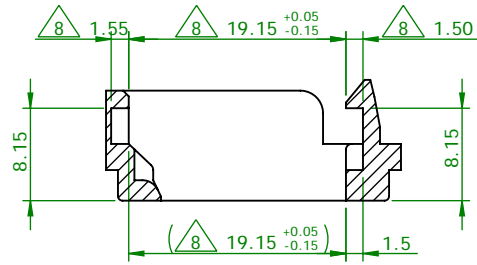
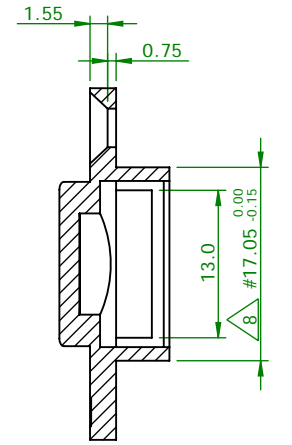
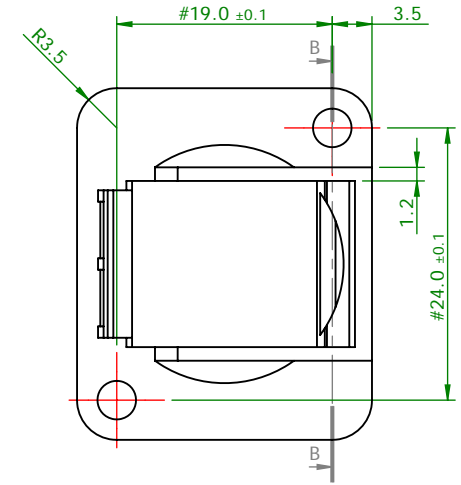
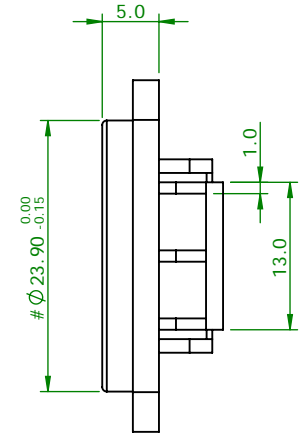
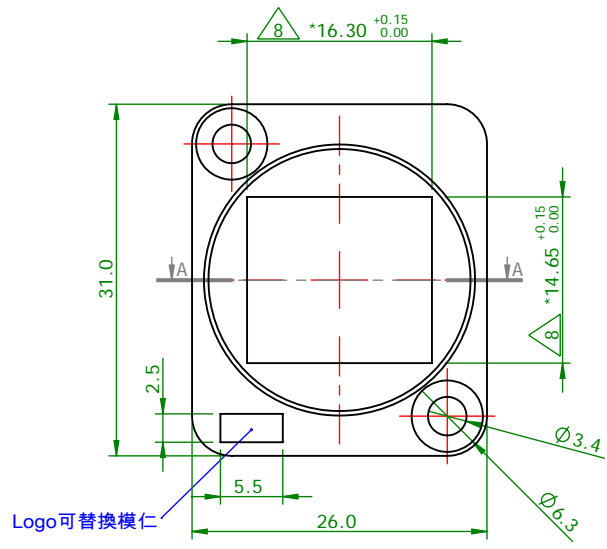
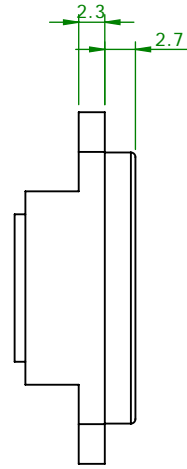
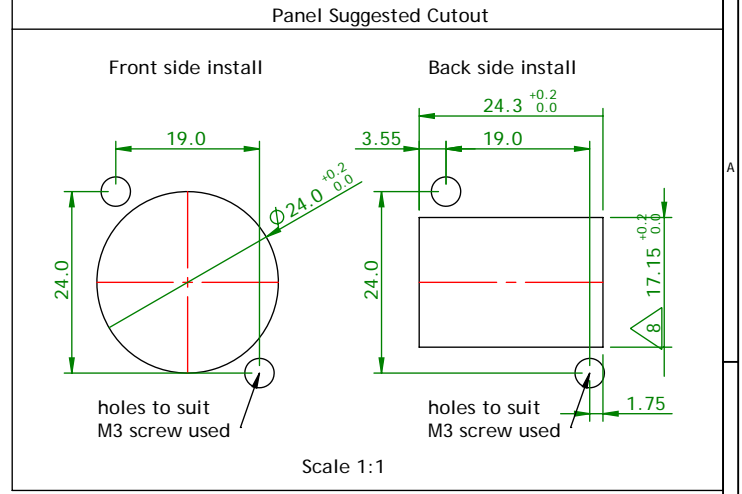
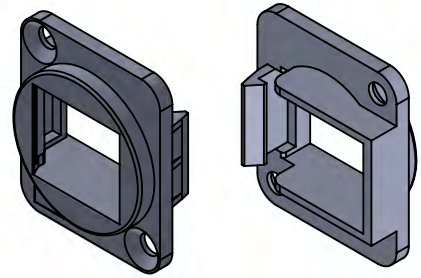


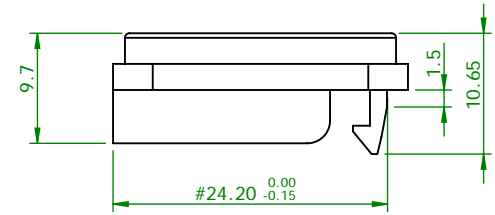
Reference Only



Section A-A



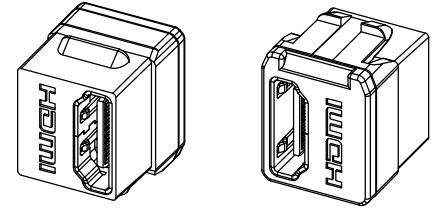
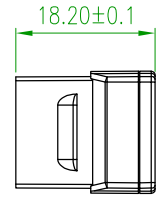
Section B-B



MATERIAL
Frame: PC, UL94V-0
RoHS 2 compliant

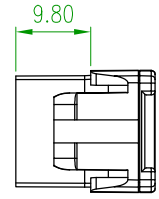
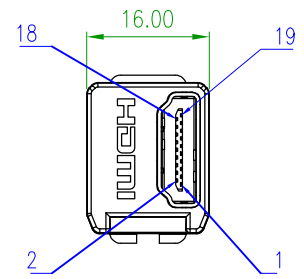
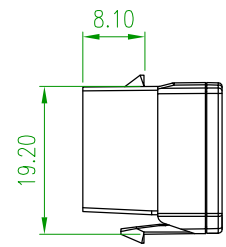
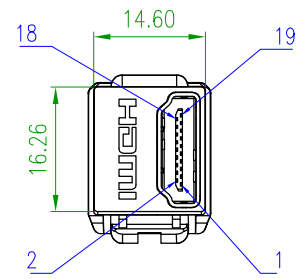
DRAWN BY					PART NO. 3013BUSXLRBK			REV. A8					
APPROVED BY													
UNIT: mm [inch]					CUSTOMER P/N.								
TOLERANCES:													
-20	-50	-150	150~	ANGLE									
±0.2	±0.4	±0.5	±1.5	±2°									
REV.		DESCRIPTION		DATE		3rd Angle Projection		DATE		SCALE		SHEET	
								2019/10/24		3:2		1/1	

210HD06G2XX PIN ASSIGNMENT		
A TYPE (P1)		A TYPE (P2)
1		1
2		2
3		3
4		4
5		5
6		6
7		7
8		8
9		9
10		10
11		11
12		12
13		13
14		14
15		15
16		16
17		17
18		18
19		19
SHELL		SHELL



A TYPE (P1)

A TYPE (P2)



MATERIAL
 Housing: High-impact Acrylonitrile Butadiene Styrene (ABS resin), UL 94 V-0 rated
 PCB: FR4, t=1.0mm , UL 94 V-0 rated

HDMI Connector:
 Shell: Copper alloy, plated with Tin-Lead
 Plastic: High-impact Polybutylene terephthalate (PBT), UL 94 V-0 rated, Glass Filled 130°C
 Contact: Copper Alloy
 RoHS 2 compliant

ELECTRICAL
 Voltage Rating: 40V AC (rms)
 Contact Current Rating: 0.5 Amps Min.
 Insulation Resistance: 100 M ohm Min
 Dielectric Withstanding Voltage: 300 V AC
 Contact Resistance: 30 m ohm Max.
 Operation Temperature:-20°C to +85°C



DRAWN BY
 Kihai Lee
 APPROVED BY
 Kevin Wu
 UNIT: mm [inch]
 TOLERANCES:

PART NO.	210HD06G2XX	VER.	2
CUSTOMER P/N.			

REV.	DESCRIPTION	DATE	3rd Angle Projection	ANGLE
2	Add pin assignment	2019.05.22	±0.2	±0.4
1	First edition	2013.06.10	±0.5	±1.5
			±0.5	±1.5
			±1.5	±2°

DATE: 2019.05.22
 SCALE: 1:1
 SHEET: 1/1